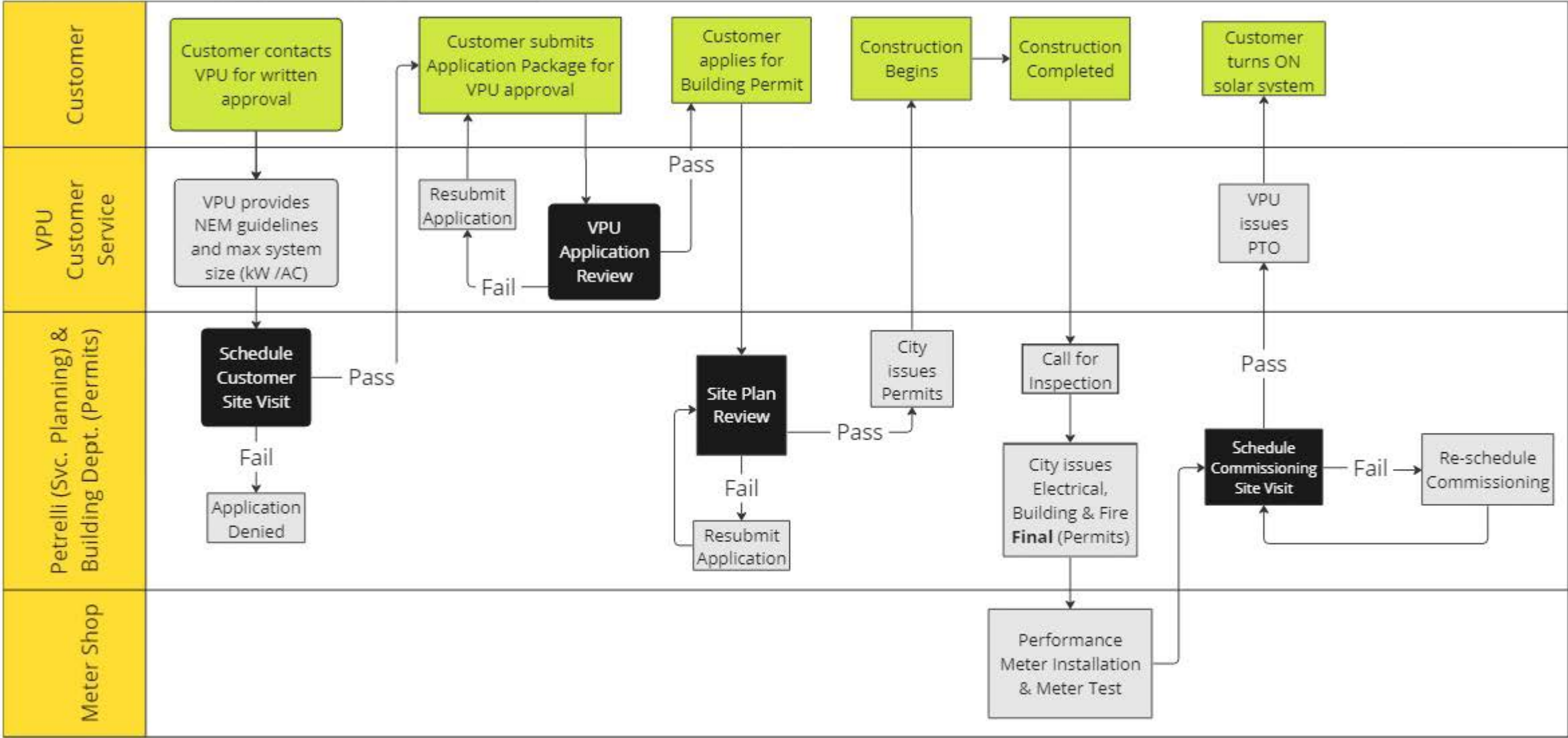


Vernon Public Utilities (VPU): Solar Flowchart



- Customer shall not begin construction, until the City of Vernon Building Department approves plan check.
- Once electrical, fire and building permits passes final inspection, automatic shut off test (commissioning) is scheduled.
 - After the electrical permit passes final inspection, solar photovoltaic meter can be installed
 - During the automatic shut off test (commissioning), Petrelli staff will configure and test solar photovoltaic meter
- Permission to Operate (PTO) shall only be issued once all requirements are met, this includes passing the automatic shut off test (commissioning) AND passing all required inspections for the City of Vernon Building Department.

